

712.679 B&B Cultuurgrond nabij Pontweg 79 te Den Burg

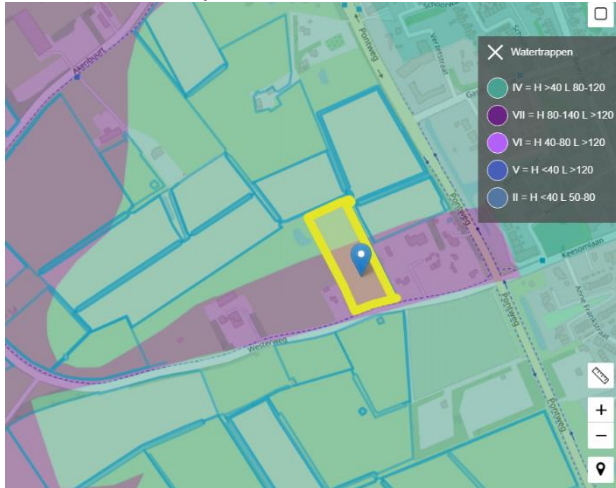
Gemeente: Texel

Provincie: Noord-Holland

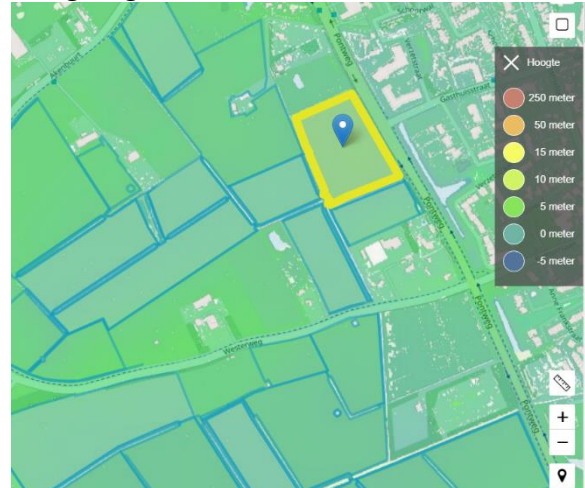
Landbouwgebied: Westelijk Holland

Waterschap: Hollands Noorderkwartier

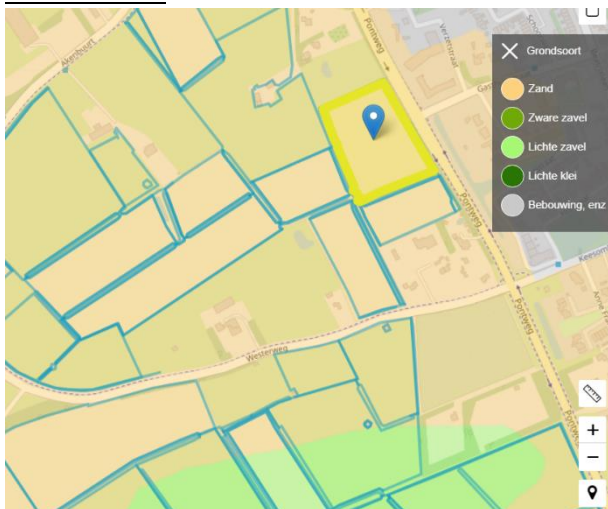
Grondwatertrap: IV en VII



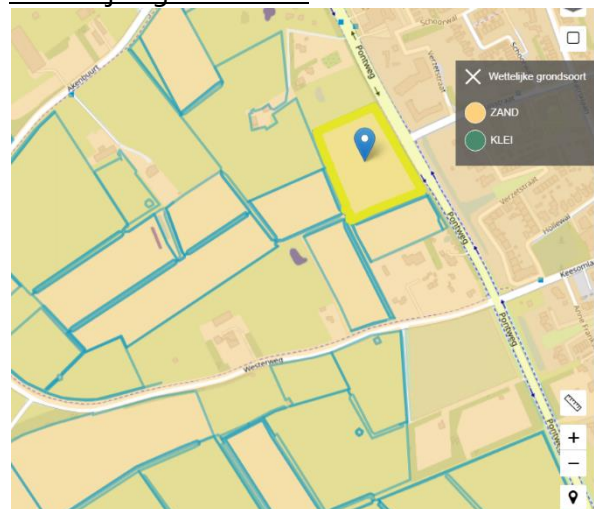
Hoogte: gemiddeld ca. 0,3 meter boven NAP



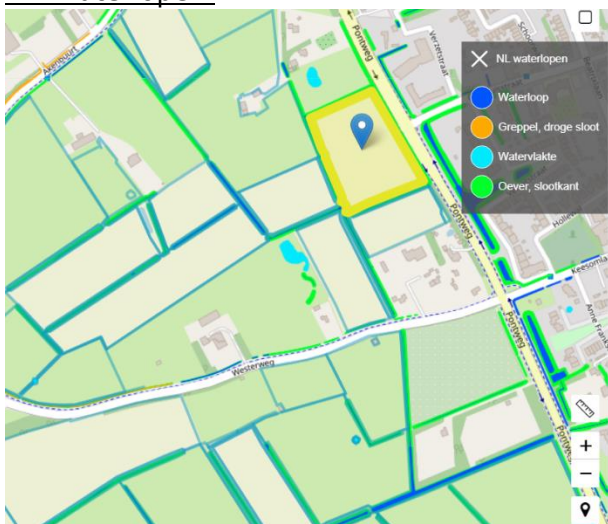
Grondsoort: Zand



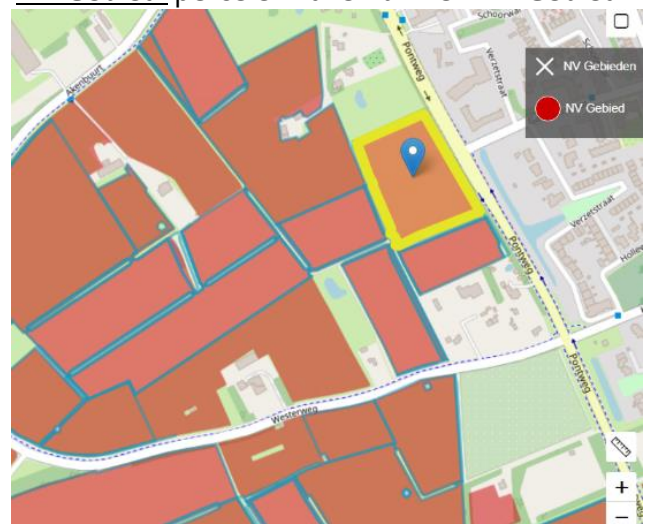
Wettelijke grondsoort: Zand



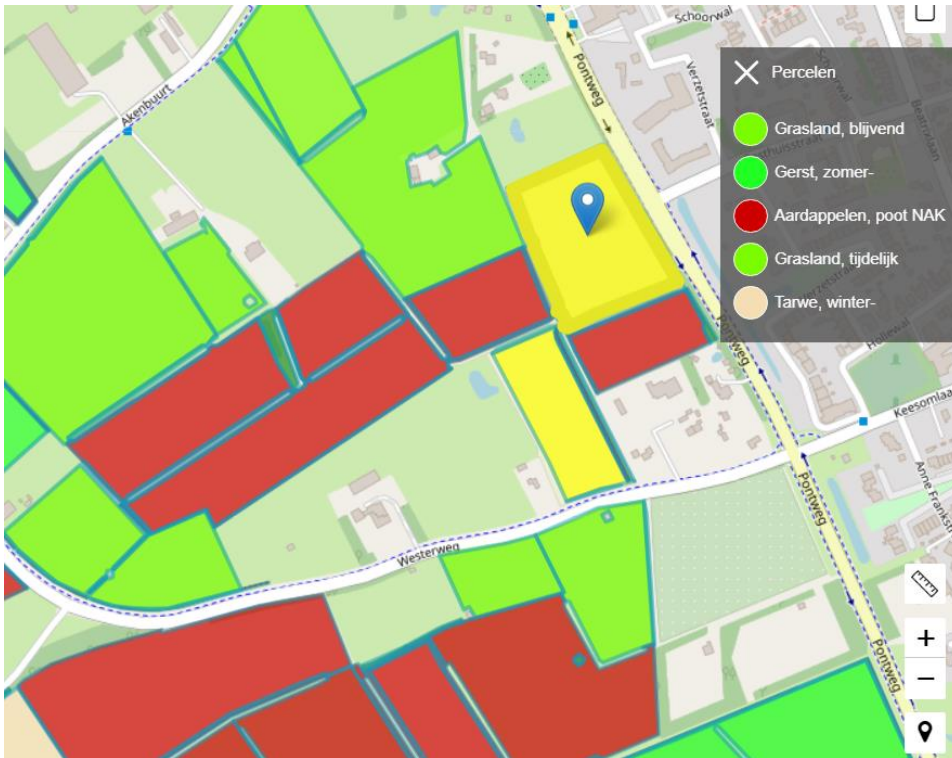
NL Waterlopen:



NV Gebied: percelen vallen binnen NV Gebied



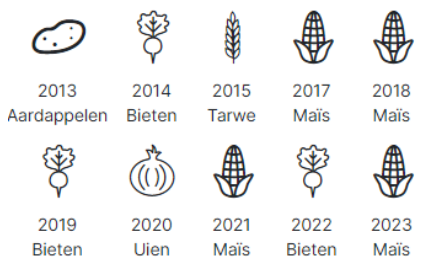
Percelen:



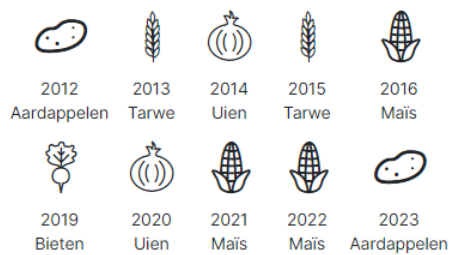
Perceel R 541:



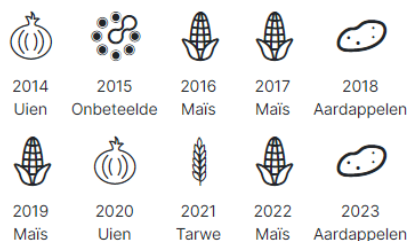
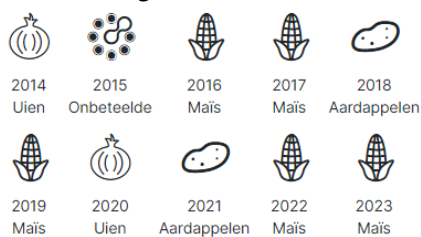
Perceel R 888



Perceel R 889



Perceel R 891



Perceel R 902

